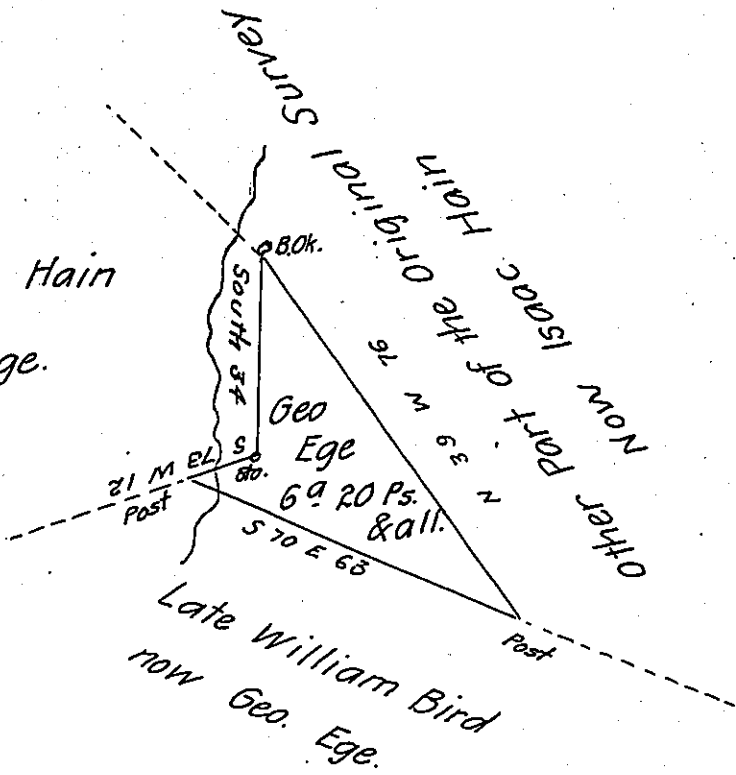


Late Christian Hain
now Geo. Ege.



Situate in Heidelberg township, Berks County, Containing
 Six acres, twenty perches and allowance of 6 Pr Ct. being part of As 119
 20 Ps & all. Surveyed on a Warrant dated Oct. 21st 1747 granted
 to Henry Hains

February 8th 1837

Matthews S. Richards D.S.

John Taylor, Esquire

Surveyor General.

IN TESTIMONY that the above is a copy of the original remaining on file in
 the Department of Internal Affairs of Pennsylvania, made
 conformably to an Act of Assembly approved the 16th day of
 February, 1833, I have hereunto set my Hand and caused
 the Seal of said Department to be affixed at Harrisburg,
 this seventh day of April 1905

George S. Brown
 Secretary of Internal Affairs.